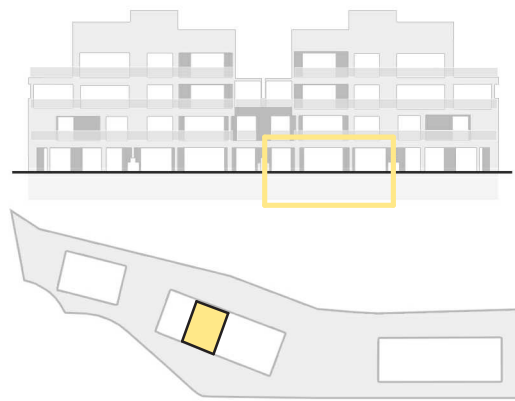




# BENALÚS

GOLDEN MILE - RESIDENCES



# B2-GFA

13

**TOTAL USABLE AREA:** 257.00 m<sup>2</sup>  
**TOTAL BUILT AREA:** 302.44 m<sup>2</sup>

### GROUND FLOOR / PLANTA BAJA 194.99 m<sup>2</sup>

DINING - LIVING ROOM - KITCHEN	SALÓN-COMEDOR-COCINA	58.13 m <sup>2</sup>
MASTER BEDROOM	DORMITORIO PPAL	16.48 m <sup>2</sup>
BEDROOM 2	DORMITORIO 2	13.10 m <sup>2</sup>
BEDROOM 3	DORMITORIO 3	15.54 m <sup>2</sup>
MASTER BATHROOM	BAÑO PPAL	5.14 m <sup>2</sup>
BATH 2	BAÑO 2	4.49 m <sup>2</sup>
BATH 3	BAÑO 3	4.74 m <sup>2</sup>
TOILET	ASEO	2.43 m <sup>2</sup>
HALLWAY	DISTRIBUIDOR	2.55 m <sup>2</sup>

**ENCLOSED USABLE AREA** 122.61 m<sup>2</sup>

TERRACE I TERRAZA I 72.37 m<sup>2</sup>

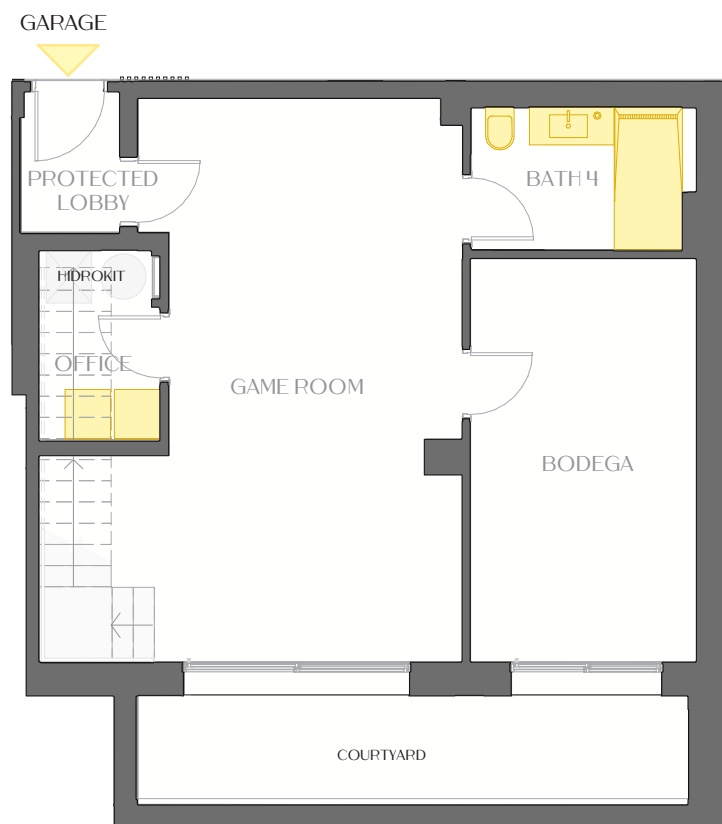
**OPEN USABLE AREA** 72.37 m<sup>2</sup>

### BASEMENT / ZONA AUXILIAR 62.01 m<sup>2</sup>

GAME ROOM	SALA DE JUEGOS	34.06 m <sup>2</sup>
BODEGA	BODEGA	16.00 m <sup>2</sup>
BATH 4	BAÑO 4	5.48 m <sup>2</sup>
OFFICE	OFFICE	4.03 m <sup>2</sup>
PROTECTED LOBBY	VEST. GARAJE	2.44 m <sup>2</sup>

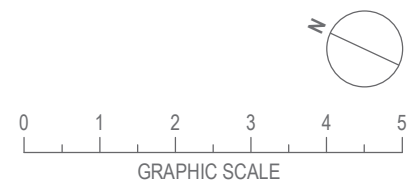
**ENCLOSED USABLE AREA** 62.01 m<sup>2</sup>

\* GARDEN&POOL / JARDÍN&PISCINA 117 m<sup>2</sup>



BASEMENT

GROUND FLOOR



Subject to possible changes agreed the technical direction during the execution time.  
Sujeto a posibles modificaciones acordadas por las dirección facultativa durante el proceso de ejecución.